

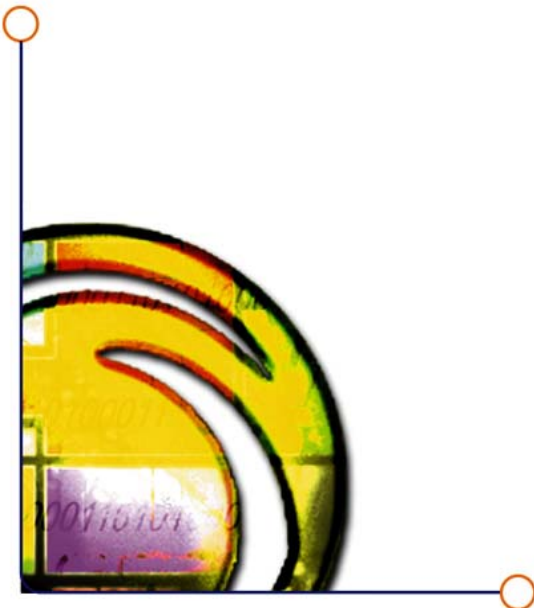


RealNetworks Presentation Maker powered by softTV.net Quickstart Guide

Software Release Version: 1.2

User's Guide Version: 1.2

softTV.net



Contact Info:

support@softv.net
sales@softv.net

www.softv.net
Streaming Media Made Simple



Table of Contents

1	Presentation Maker Quick Start.....	1
1.1	Main Window	1
1.2	Step 1: Choose Presentation Template	2
1.2.1	Template Gallery	2
1.2.2	Template Preview	2
1.3	Step 2: Set Presentation Properties.....	3
1.3.1	Edit Properties.....	3
1.4	Step 3: Add Slides to Presentation	2
1.4.1	Slides.....	2
1.4.2	Import PowerPoint.....	3
1.4.3	Add Slide	3
1.4.4	Remove Slide.....	3
1.4.5	Edit Slide	3
1.4.6	Preload Slides	3
1.5	Step 4: Video/Audio Settings	4
1.5.1	Video On Demand or Live Webcast.....	4
1.5.2	Video On Demand.....	4
1.5.3	Live Webcast.....	4
1.6	Step 5: Publish Presentation	4
1.6.1	Publish Presentation	4

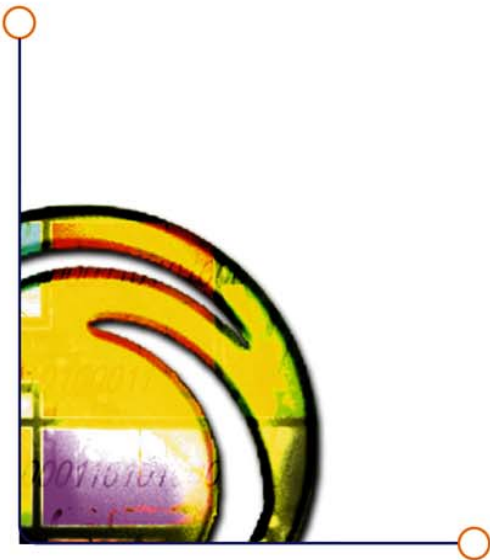




*RealNetworks Presentation Maker
powered by sofTV.net
QuickStart Guide*

*software release version 1.2
user's guide version 1.2*

1.6.2	Preview Presentation	November 28, 2002
1.7	Step 6: Do Live Show	5





RealNetworks Presentation Maker powered by sofTV.net QuickStart Guide

*software release version 1.2
user's guide version 1.2*

November 28, 2002

1 Presentation Maker Quick Start

Presentation Maker allows you to create web-based streaming video presentations including PowerPoint slides that change in synchronization with the video or audio content. Presentation Maker makes building these presentations easy - just follow a few simple steps, click on Publish, and your presentation is complete!

The Presentation Maker application is used to create a web page from a Presentation Template, a PowerPoint presentation, and a video source. You can choose to create a Video-On-Demand presentation, or a Live Presentation, simply by specifying the video source as a file on your hard disk, or a live video stream using the built in encoding capabilities. Presentation Maker allows you to insert slide sync commands into a Video-On-Demand file, or insert slide sync commands into a live video stream.

Note: In order to use the PowerPoint import feature of Presentation Maker, you must have Microsoft PowerPoint 2000 or XP installed on your computer. Presentation Maker uses PowerPoint internally to format the slides, and to read the PowerPoint PPT files.

1.1 Main Window

The Presentation Maker main window is your workspace for creating web-based presentations. This window allows you to specify the presentation properties, template, PowerPoint presentation, a video source, then publish your page locally, or remotely using FTP.

Contact: sales@softv.net

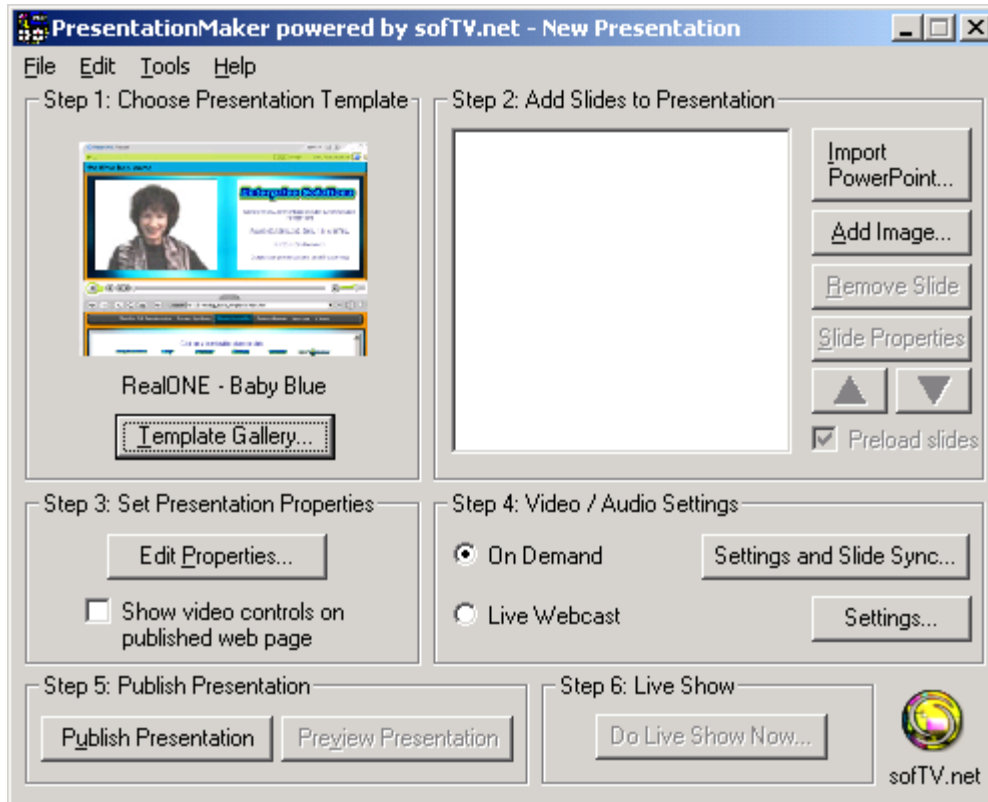
support@softv.net



RealNetworks Presentation Maker powered by sofTV.net QuickStart Guide

software release version 1.2
user's guide version 1.2

November 28, 2002



1.2 Step 1: Choose Presentation Template

Presentation Maker uses Template files to define how a presentation should appear, and to define which regions should be included in the published web page.

1.2.1 Template Gallery

To choose a template, click on Template Gallery. This will open the Template Browser window, which allows you to choose a template.

1.2.2 Template Preview

The preview window shows a sample layout produced using the currently selected Presentation Template.

1.3 Step 2: Add Slides to Presentation

1.3.1 Slides

Presentation Maker allows you to add slides to a presentation in a number of ways. You can Import a Microsoft PowerPoint presentation into the Slide area, or you can add graphics, using the Add Slide button. The end result is a series of images which will be displayed in the published web page, and can

Contact: sales@softv.net

support@softv.net



RealNetworks Presentation Maker powered by sofTV.net QuickStart Guide

*software release version 1.2
user's guide version 1.2*

November 28, 2002

be controlled by the video stream. You can also simply drag and drop one or more graphic files onto the Presentation Maker window, if you want to import many files from a directory.

1.3.2 Import PowerPoint...

The import button allows you to import a PowerPoint presentation into Presentation Maker.

A File Open dialog box will appear, allowing you to navigate to the location of the PowerPoint file on your hard disk.

Note that Presentation Maker supports drag and drop importing as well. You can drag and drop a PowerPoint file, or a JPG or GIF into the Presentation Maker application.

1.3.3 Add Slide

The Add Slide button opens the Add dialog, which allows you to add Slides one at a time. Slides are JPG or GIF graphics which are displayed in the thumbnail area of the web page, and shown in the Current Slide area when instructed to by commands in the video stream.

For each slide you specify the path to the graphic file, and a title. The title will be displayed in the table of contents, and is used as the slide title on the web page.

The new slide is always added to the end of the presentation.

1.3.4 Remove Slide

To remove a slide from a presentation, simply click on the Remove Slide button. You can remove some slides from a PowerPoint presentation, and leave the rest untouched.

1.3.5 Edit Slide

The edit Slide button opens the Slide Properties dialog. This dialog allows you to edit the Slide Title, and the Image Filename. You can also edit associated slide notes, or add an URL Tour.

1.3.6 Preload Slides

This checkbox is used to specify whether the slide images should be pre-loaded when the web page is viewed. You may not want to preload slides if the loading of slide images during the presentation would interfere with the streaming video, or if you have a large number of slides in your presentation (which means the page may load slowly). The default is to preload the slides. Preload slides only works with sofTV.net DHTML templates.

1.4 Step 3: Set Presentation Properties

1.4.1 Edit Properties

The Edit Properties button will cause the Properties Dialog to appear. You can set all the web page properties using this dialog. Values you enter will be inserted into the published web page when you click on Publish Presentation.

Contact: sales@softv.net

support@softv.net



RealNetworks Presentation Maker powered by sofTV.net QuickStart Guide

software release version 1.2
user's guide version 1.2

November 28, 2002

1.5 Step 4: Video/Audio Settings

1.5.1 Video On Demand or Live Webcast

Use the radio buttons to select whether you wish to do a Video On Demand presentation, or a Live Presentation.

1.5.2 Video On Demand

For Video on Demand Presentations, click on "On demand" radio button and click the "Settings and slide sync..." button to open the Video window where you can view your video clip, and enter slide synchronization timing. If you have an existing media file you wish to use, select "choose existing file", and browse to set it.

NOTE: If your existing media file already has triggers in it that you wish to keep in the video, instead of clicking the "Browse" button (which will remove all the triggers as the clip loads), select "Import video & slide sync...". This will load your media file along with the existing triggers.

If you don't have a video clip, you can record a new clip by simply browsing for a place to save the clip and clicking on the record button.

1.5.3 Live Webcast

For Live Presentations, simply select the "Live Webcast" radio button. This will enable the "Step 6: Do Live Show" portion of the dialog.

Use the "Settings" button to select whether you will be using an encoder and camera connected to directly your computer, or a Remote encoder located somewhere else on your network. If you select to use an encoder on your computer, the "Do Live Show" button will open the sofTV.Live Webcast dialog. If you select Remote Encoder, the "Step 6: Do Live Show" button will open sofTV.LiveSync, allowing you to control the slide synchronization on the remote encoder.

1.6 Step 5: Publish Presentation

1.6.1 Publish Presentation

The Publish Presentation button is the final step to creating your web page. The Publish dialog will appear - allowing you to choose to publish locally, or remotely using FTP. If you are doing a live webcast or if your on demand media file is on a RealServer, it also allows you to enter the URL of the media source.

The Publish command will do the following things:

- Open the PowerPoint presentation, and extract JPG images of each slide
- Create a Table Of Contents, if one is required. In the case of Video On Demand files, the Table Of Contents will contain seek commands that will seek the video to the appropriate location in the video file. NOTE: If your on demand media file is on a RealServer, then enter the URL of the media source into "Video URL" to have the table of contents created
- Insert the Presentation Properties into the appropriate locations in the presentation file(s).

Contact: sales@softv.net

support@softv.net



RealNetworks Presentation Maker powered by sofTV.net QuickStart Guide

*software release version 1.2
user's guide version 1.2*

November 28, 2002

- Delete all unused regions from your template file
- Build the HTML code for your presentation
- Copy the HTML code to your publish location
- Copy the needed sofTV.net Java files to your publish location
- Copy the background graphic to your publish location
- Copy the slide graphics to your publish location. Two sets of graphics are created - a small thumbnail, and a larger image for use in the CurrentSlide area.
- Copy the local video file to your publish location (such as Real Server), if not a live stream
- Copy all other needed files to your publish location (such as a Real Server or Web Server)

If the publish is occurring via FTP, all the necessary files will be copied over to the specified FTP location.

The publish button will be disabled during the publish process.

Publishing may take a few minutes, depending on the size of your PowerPoint file.

1.6.2 Preview Presentation

The View button allows you to open the resulting web page in your default web browser. This option is available when you publish locally. This button is not available during the publish operation.

1.7 Step 6: Do Live Show

This allows the user to encode a live presentation directly from within Presentation Maker or connect to a remote encoder. This button is enabled when you select the "Live Webcast" setting in Step 4.

Clicking on "Do Live Show Now..." will open the Live Webcast window, which allows the user to start encoding video or audio at the desktop, and insert slide sync commands within the video or audio stream.

There are 4 methods for controlling slide change commands during a live webcast:

- using the sofTV.Encoder user interface, which is part of the Presentation Maker application.
- using sofTV.PowerPoint Add In.2 directly from within PowerPoint.
- using the sofTV.LiveSync user interface, which is part of the Presentation Maker application.
- and, in the case where you are controlling other things on the web page live in addition to slide changes, using sofTV.LiveShow.2.

Contact: sales@softv.net

support@softv.net